



THE

hab

by **USHA**<sup>®</sup>



Inspire • Sew • Create



[www.thehab-usha.com](http://www.thehab-usha.com)



# Table of Contents



1. Usha International	02
~~~~~	
2. The hab by USHA	03
~~~~~	
3. Sewing Experiences	05
- Workshops	06
- Stitch-it-yourself	18
~~~~~	
4. Sewing Products	22
~~~~~	
5. Sewing Machines	24
- Automatic	25
- Embroidery Odyssey with Memory Craft	29
- Machine Accessories	34
~~~~~	



**USHA International** Usha International is a leading consumer durables company and amongst India's most trusted brands. Founded in 1936 by Lala Shri Ram as a sewing machines company, it has grown and evolved and today offers a diversified portfolio of products including fans, kitchen and home appliances, heating and cooling water solutions, and lights. Built over across nine decades, the legacy brand has kept pace with the new realities and offers products aligned to the modern consumer need and is firmly entrenched in the Indian consumer eco-system both in the online and offline space.

With its headquarters in Gurgaon, 16 location offices, 50+ company showrooms, 30+ warehouses, and 320+ service centres and an in-house customer call centre ensuring its customers get a quick resolution to any issues they may face, Usha embodies the spirit of customer-centricity. Usha exports its products to various countries across the globe and also has overseas offices in China and Sri Lanka. For more information please visit [www.usha.com](http://www.usha.com)



THE  
**hab**  
 by **U S H A**

INSPIRE • SEW • CREATE

Discover our state-of-the-art haberdashery – The hab – where sewing legacy meets innovation in an unparalleled experience. Our exclusive curated selection of premium sewing supplies, cutting-edge Usha Janome sewing machines, and one of a kind DIY sewing experiences are all designed for creative enthusiasts across all age groups.

Indulge in our bespoke experiential workshops, Stitch-It-Yourself activities, or weekend events, tailored to elevate your craft with hands-on instructions from our highly skilled sewing experts.

From the simple to the intricate, from the basic to the high-tech, from novice to expert across embroidering, quilting, knitting, crocheting, and more – The hab by Usha is a one-stop haven that promises an extraordinary journey into the mesmerising world of sewing.



**One Stop Luxury boutique haberdashery that offers:**

<b>Workshops:</b>	The hab offers an exclusive array of over 260 carefully curated courses, spanning from beginner to expert levels. Choose the time slots – between 11:30 AM to 1:30 PM and 3:30 PM to 5:30 PM – as per your convenience and enjoy the personalized individualised workshops sessions.
<b>Activities:</b>	Choose from over 50 creative DIY projects, in a 60-90 minute immersive experiential that will give you a peek into the creative, and de-stressing realm of sewing.
<b>Events:</b>	Elevate your weekends with our exclusive, themed events, chosen to ensure you walk out creatively satiated, with a smile in your heart and a beautifully crafted piece in your hands. Available on BookMyShow, these events spur your creativity as you stitch and create.
<b>Sewing Products:</b>	We offer an exquisite range of sewing products at The hab by Usha – from affordable, high-quality threads, sequins, and beads, to premium crochet tools and much more. The hab is your ultimate destination where sewing meets luxury meets craftsmanship. Our dedicated sourcing team goes above and beyond to bring to you the finest selection to up your creative game.
<b>Sewing Machines:</b>	At The hab, you can explore our range of user-friendly, high-tech Usha Janome sewing machines for sewing, embroidering, and quilting. Powered by Japanese technology, these are designed for precision, sophistication, and unparalleled performance.

Fall  
in *Love*  
**WITH  
SEWING**

# Sewing Experiences

The hab is for anyone open to exploring new experiences – it does not matter whether you are six years or 65 years, whether you are a hobbyist or a business owner, whether you know sewing or you don't, and whether sewing for you is therapeutic or a creative outlet. At The hab, you will learn how to navigate your way through the simple, the intimidating, and the intricate under our skilled experts who ensure you enjoy the process as much as the outcome – be it hi-fashion ensembles, crochet, punch needle, or then utilitarian homeware.





## Sewing Workshops



\* Select workshops are available in single or group sessions, in-store, outdoors, or at home. For pricing, curriculum, or details on any of the following workshops, please contact us.



Basic Sewing	
Basic sewing	16 Hrs
Introduction to Artistic Digitizer*	16 Hrs
Introduction to Artistic Digitizer Junior*	6 Hrs
Introduction to sewing	6 Hrs
Introduction to sewing: Dream Maker 120	6 Hrs
Introduction to sewing: Memory Craft Machines (embroidery & sewing)	14 Hrs
Introduction to sewing: Memory Craft Machines (only embroidery)	8 Hrs

Advanced	
Deconstruction	2 Hrs
Surface textures – Part 1	12 Hrs
Surface textures – Part 2	12 Hrs

Making with Sewing	
Cushion covers	12 Hrs
Folded splay star cushion technique	16 Hrs
Handbag	10 Hrs
Hollow cube quilted handbag with gusset	12 Hrs
Infant layette	18 Hrs
Kurta V-neck	12 Hrs
Laptop sleeve	8 Hrs
Layered circular stole	8 Hrs
Organiser handbag	18 Hrs
Princess cut blouse	12 Hrs
Quilted embroidery pouch	4 Hrs
Straight pants	8 Hrs



## Sewing Accessories Workshops

\* Select workshops are available in single or group sessions, in-store, outdoors, or at home. For pricing, curriculum, or details on any of the following workshops, please contact us.

AGE  
**8+**  
YEARS



Basic Sewing Accessories:	
0.65 Seam Foot	2 Hrs
3-way cording foot	2 Hrs
Beading foot	2 Hrs
Binder foot	2 Hrs
Circular foot	6 Hrs
Darning foot	8 Hrs
Free motion couching foot	6 Hrs
Fringe foot – applique	2 Hrs
Fringe foot – bow stitch	2 Hrs
Fringe foot – edge Fringing	2 Hrs
Fringe foot – embroidery double fringe	2 Hrs
Fringe foot – fagoting	2 Hrs
Gathering foot	2 Hrs
Pintucking foot	6 Hrs
Piping foot	6 Hrs
Ribbon & sequins foot	2 Hrs
Roller foot	2 Hrs
Rotary even feed foot	8 Hrs
Ruffler foot	6 Hrs
Ultra glide foot	2 Hrs
Walker foot	2 Hrs

Advanced Sewing Accessories:	
0.65 seam foot 1 – grid	8 Hrs
0.65 seam foot 2 – waves	8 Hrs
3-way cording foot 1 – woollen Ikat	12 Hrs
3-way cording foot 2 – applique	12 Hrs
Beading foot 1 – seed bead string	12 Hrs
Beading foot 2 – ribbon weaving	6 Hrs
Binding foot 1 – silver interlacing	8 Hrs
Binding foot 2 – triangles	12 Hrs
Darning foot 1 – layered circles	8 Hrs
Darning foot 2 – portrait	18 Hrs
Gathering foot 1 – fire	6 Hrs
Gathering foot 2 – floral	8 Hrs
Pin-tucking 1 – scallops	8 Hrs
Pin-tucking 2 – shading	8 Hrs
Piping 1 – jigsaw	8 Hrs
Piping 2 – spiral wave	8 Hrs
Ribbon & sequins – Interlacing	6 Hrs
Ribbon & sequins foot 1 – grid	8 Hrs
Ruffler 1 – grid	8 Hrs
Ruffler 2 – floral	12 Hrs
Ruffler 3 – rainbow	12 Hrs







## Hand Embroidery Workshops

\* Select workshops are available in single or group sessions, in-store, outdoors, or at home. For pricing, curriculum, or details on any of the following workshops, please contact us.



### Basic Hand Embroidery

Introduction to hand embroidery	20 Hrs
Ribbon embroidery	24 Hrs

### Advanced Hand Embroidery

Badla	4 Hrs
Basic stitches	6 Hrs
Gota	8 Hrs
Kamal kashida	8 Hrs
Kantha	12 Hrs
Kasuti	6 Hrs
Lucknowi	8 Hrs
Mukaish	12 Hrs
Phulkari	12 Hrs
Zardosi	12 Hrs





## Machine Embroidery Workshops



\* Select workshops are available in single or group sessions, in-store, outdoors, or at home. For pricing, curriculum, or details on any of the following workshops, please contact us.



Machine Embroidery		
Computerised Embroidery	Embroidery Cost Per Hour	1 Hrs
Machine Embroidery	Freehand Machine Embroidery	46 Hrs

Customised Digital Embroidery		
6 X 6 In	Portrait Design	2 Hrs
8 X 8 In	Portrait Design	2 Hrs
10 X 10 In		2 Hrs
11 X 9 In		2 Hrs
1 X 1 In		2 Hrs
2 X 2 In		2 Hrs
3 X 3 In		2 Hrs
4 X 4 In		2 Hrs
5 X 5 In		2 Hrs
6 X 6 In		2 Hrs
7 X 7 In		2 Hrs
8 X 8 In		2 Hrs
9 X 9 In		2 Hrs



## Apparel Workshops (Construction)



Basic	
Basic lower bodice – (Male)	16 Hrs
Basic upper bodice (Female)	12 Hrs
Basic upper bodice (Male)	8 Hrs
Lower torso – Elasticated Bottoms (Female)	8 Hrs
Lower torso – Skirt	8 Hrs

Advanced	
Garment construction course	96 Hrs
Ultimate garment construction course	340 Hrs

\* Select workshops are available in single or group sessions, in-store, outdoors, or at home. For pricing, curriculum, or details on any of the following workshops, please contact us.



Alterations	
Add darts to tighten a top, kurta, blouson, shirt, T-shirt	30 Mins
Blind stitch hemming	30 Mins
Increase size of a kurta	120 Mins
Increase size of a shirt	30 Mins
Converting full sleeve to short sleeve	30 Mins
High round neck to V-neck without binding or facing	30 Mins
High round neck to V-neck with binding or facing	120 Mins
Add a zipper to a fitted garment	30 Mins
Alter knitwear clothes	30 Mins
Alter the drop shoulders	120 Mins
Attach sleeves to the sleeveless kurta	120 Mins
Fix pant Fork	30 Mins
Fix a torn shirt collar	30 Mins
Add a slit to a kurta	30 Mins
Increase the sleeve round	30 Mins
Increasing the trouser length by adding lace	30 Mins
Shorten a long kali kurta from the waist	120 Mins
Shorten a long plain kurta	30 Mins
Convert a high round neck to a boat neck	30 Mins
Increasing length of short skirt using fabric panel	30 Mins
Increasing length of short skirt using lace	30 Mins
Stitch shirt button line	30 Mins
Waist pinching	30 Mins
Making a wide boat neck narrow using box-pleats or darts	30 Mins



## Apparel Workshops (Construction)

\* Select workshops are available in single or group sessions, in-store, outdoors, or at home. For pricing, curriculum, or details on any of the following workshops, please contact us.

AGE  
**8+**  
YEARS

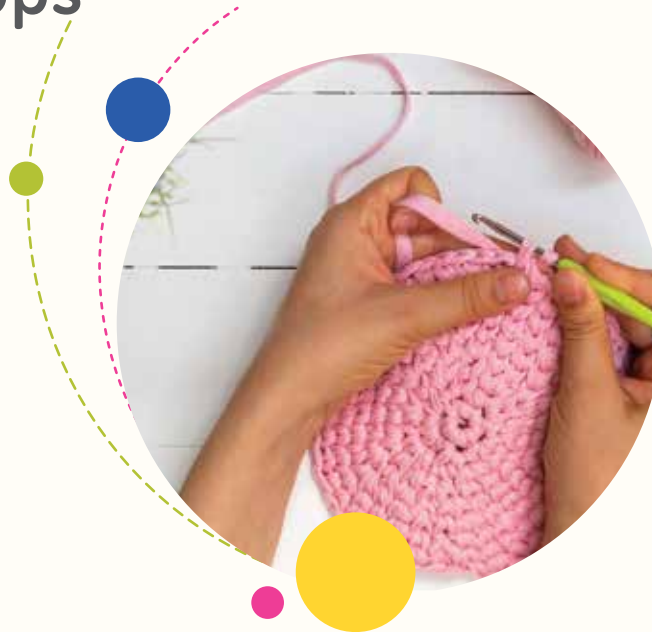


Pick Your Style	
Anarkali dress/kurta	18 Hrs
Straight kurti	8 Hrs
Princess cut blouse with lining	8 Hrs
Katori blouse	8 Hrs
Salwar making	6 Hrs
Palazo	6 Hrs
Churidar	8 Hrs
Umbrella skirt	6 Hrs
Angrakha kurta	16 Hrs
Straight pant with waistband & side pocket	8 Hrs
Corset	20 Hrs
Bikini	16 Hrs

Customisation: (Bring your own idea, and learn to bring it to life)	
Pattern making and stitching	12 Hrs
Pattern making and stitching	15 Hrs
Pattern making and stitching	18 Hrs
Pattern making and stitching	3 Hrs
Pattern making and stitching	6 Hrs
Pattern making and stitching	8 Hrs
Pre-pleated saree – dhoti style	6 Hrs
Pre-pleated saree – regular style	6 Hrs



## Textile Art Workshops



\* Select workshops are available in single or group sessions, in-store, outdoors, or at home. For pricing, curriculum, or details on any of the following workshops, please contact us.



Knitting	
Introduction to knitting	12 Hrs
Knitted blanket	16 Hrs
Knitted matinee coat, bonnet, and booties	18 Hrs
Knitted stole	12 Hrs
Knitted top	14 Hrs

Macrame	
Macrame and braiding – 10 types of knots	6 Hrs
Macrame and braiding handbag	16 Hrs
Macrame and braiding potholder	8 Hrs

Transformational Reconstruction Cutting	
TR Cutting 1	54 Hrs
TR Cutting 2	62 Hrs
TR cutting 3	72 Hrs

Punch Needle	
11 Stitches	6 Hrs
15 Stitches	10 Hrs
9 Stitches	6 Hrs
Bat on a cushion	18 Hrs
Cloudy moon	6 Hrs
Floral	4 Hrs
Panda, zebra, and lion	6 Hrs
Portrait	24 Hrs
Simpson	6 Hrs
Squirrel	15 Hrs
Swan on a Ring	12 Hrs
Tiger	10 Hrs



## Textile Art Workshops

\* Select workshops are available in single or group sessions, in-store, outdoors, or at home. For pricing, curriculum, or details on any of the following workshops, please contact us.



### Leather Textures

2D cutwork	8 Hrs
3D floral	8 Hrs
Cutwork	6 Hrs
Fagoting	8 Hrs
Leather panel fish-scale	6 Hrs
Leather panel spine	6 Hrs
Mirror work	6 Hrs
Organza layering	6 Hrs
Puffed quilting	6 Hrs
Tone-on-tone	6 Hrs

### Crochet

Introduction to crochet	18 Hrs
Crochet blanket	12 Hrs
Crochet clutch	12 Hrs



## Quilting Workshops

\* Select workshops are available in single or group sessions, in-store, outdoors, or at home. For pricing, curriculum, or details on any of the following workshops, please contact us.



Quilting Patterns	
Cathedral	12 Hrs
Cathedral pinwheel	6 Hrs
Chevron	8 Hrs
Curved circle	16 Hrs
Customized art quilt	18 Hrs
Customized art quilt	22 Hrs
Customized art quilt	24 Hrs
Customized art quilt	28 Hrs
Customized art quilt	30 Hrs
Double wedding ring	24 Hrs
Dresden	8 Hrs
Folded 8-petal star quilt cushion	12 Hrs
Folded splay star	16 Hrs
Giraffe collage	24 Hrs
Hawaiian quilting	18 Hrs
Herringbone	12 Hrs
Hexagon honeycomb	16 Hrs
Hollow cube quilt	12 Hrs
Log cabin - floral water colour	12 Hrs
Log cabin - twisted	12 Hrs
Mosaic 1 - all mosaic	8 Hrs
Mosaic 2 - reverse applique of mosaic	6 Hrs
Mosaic 3 - applique with confetti	6 Hrs
Paper piecing - pineapple	8 Hrs
Paper piecing - rose	12 Hrs
Puffed quilt	10 Hrs

Quilting Patterns	
Quilted puffed block embroidery 9" X 9"	6 Hrs
Reverse applique	24 Hrs
Stain glass	18 Hrs
Star 1 - 4 & 8 block	8 Hrs
Star 2 - compass	12 Hrs
Trapunto - applique Indian theme	12 Hrs
Trapunto - machine embroidery portrait	12 Hrs
Tumbling block	16 Hrs



## Custom & Rental Workshops

\* Select workshops are available in single or group sessions, in-store, outdoors, or at home. For pricing, curriculum, or details on any of the following workshops, please contact us.



In-Store Rental	
Introduction to MC	- 9850, Skyline, 8200 QCP, 6700P
Introduction to Automatic zigzagged machines	- DM120, Sew Magic, Design Craft, Quilt Magic
Introduction to UJ	- Allure, Wonder Stitch, Stitch Magic

In-Store Rental	
1 Session	3 Hrs.
Can be booked for up to 8 sessions	24 Hrs







## Kids Special Workshops



\* Select workshops are available in single or group sessions, in-store, outdoors, or at home. For pricing, curriculum, or details on any of the following workshops, please contact us.



For 4 years to 6 years		
Sticking:	Crown	30 Mins
Sticking:	Lollipop bookmark	30 Mins
Sticking:	Mask (any 1)	30 Mins
Sticking:	Turtle wall hangin	45 Mins
Sticking:	Table mat and coaster set	1 Hr

For 7 years to 9 years		
Sew and Make:	Piggy bank	30 Mins
Sew and Make:	Multipurpose pouch	1 Hrs
Sew and Make:	Waist pouch with chain	1 Hrs
Sew and Make:	Greeting card	3 Hrs
Sew and Make:	Hang on waist pouch	3 Hrs
Sew and Make:	Pencil roll-up pouch	3 Hrs

For 10 years to 12 years		
Sew and Make:	Drawstring bag	30 Mins
Sew and Make:	Flower vase	30 Mins
Sew and Make:	Multipurpose pouch	30 Mins
Sew and Make:	Printed fabric cushion cover with filler	30 Mins
Sew and Make:	Textured fabric cushion cover with filler	30 Mins
Sew and Make:	Beanie hat	2 Hrs
Sew and Make:	Sling bag	2 Hrs
Sew and Make:	Stationery pouch	2 Hrs
Sew and Make:	Tiffin-box carrier	2 Hrs
Sew and Make:	Backpack	3 Hrs
Sew and Make:	Bean bag	3 Hrs
Sew and Make:	Bedside organizer	3 Hrs
Sew and Make:	File folder	3 Hrs
Sew and Make:	Tote bag	3 Hrs
Sew and Make:	Wallet	3 Hrs
Sew and Make:	Book bag	3 Hrs



## Something For Everyone – Workshops

\* Multiple options available for select workshops. One can opt to do it alone or in a group. Further you can also choose where you'd like the session – in-store, outdoor, or at-home. Prices available on request.



### Celebrating Life

Wedding ready: Handmade touches for a special day	Custom Hours
Great expectations: Lovingly curated gifts for expecting mom and baby	8 Hrs
A stitch in time: Starter stitching lessons for kids	Custom Package
EcoStitch: Crafting a sustainable future, one seam at a time!	Custom Hours

### Therapeutic

All Stitch and NO puff: A creative escape for smokers	20 Hrs
Who let the endorphins out? Stress management for all	8 Hrs



# Stitch-It-Yourself

Pick a ready DIY project in-store, stitch it yourself and take home a token of creativity in 60-90 minutes.  
A truly immersive DIY experiential into the world of sewing.

ACTIVITIES | EVENTS | PRIVATE EVENTS





## Something For Every Walk-in – Activity

\* Select activities are available in single or group sessions, in-store, outdoors, or at home. For pricing, curriculum, or details on any of the following workshops, please contact us.



Walk-in to our store anytime, any day, and simply choose from our 50+ DIY project options to spend the next 60-90 mins creating a piece of art and utility.





Crescendo moments



Tiny stitches, BIG memories



PET-N-PAL FASHION



New year, new me

## Something For Every Weekend – Events



Book your spot for a variety of themed workshops for a fun community experience – relax while you learn and create! Follow us on Instagram ([thehab\\_usaha](#)) today to checkout our what's next in queue!



## Something For Every Milestone – Private Events

\* Select activities are available in single or group sessions, in-store, outdoors, or at home. For pricing, curriculum, or details on any of the following workshops, please contact us.



Birthdays



Dates & Anniversary



Baby Showers



Bachelorette

Get in touch with us to curate a customised and unique private event hosted exclusively at The hab by Usha to mark the milestone event in your life and create a lifetime of cherished memories.

# Sewing Products

We also offer a whole range of sewing essentials and more – from basic threads, needles, and buttons to premium sewing machines, fine wool, and exclusive embellishments to make your journey into the world of sewing as seamless as possible. Catering across all budgets, our curated collection brings the best for hobbyists and professionals alike, all at one place.

What truly sets us apart is our unwavering commitment to fulfilling your creative needs. If it's not in stock, our dedicated sourcing team will go the extra mile to procure it, allowing you to focus on what matters most – your creative process.

Come, discover quality, range, and unmatched service at The hab by Usha, where creativity thrives!

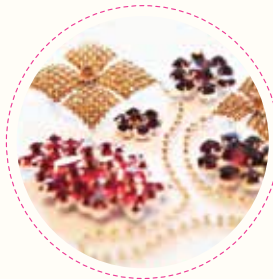




Sequins



Stones



Brooches / Pendants



Beads



Buttons



Rivets



Zips



Patches / Neck pieces



Threads / Cords



Borders



Laces / Ribbons



Tools



Paper Patterns



Wool



Felt



Fusing / Wadding



Do it yourself kits





# Sewing Machines

You will be spoilt for choice as you walk into the world of thread craft as each model of the Usha Janome machine seems more interesting than the other – it's all yours for the taking. Each one has its own USPs – from customised embroidery options to multiple in-built stitch functions, from computerised patterns to automatic memory craft – these machines will tickle your creative juices, adding to your joy of bringing your projects to life...  
one stitch at a time!





## Dream Stitch

### 14 Stitch Function

- Compact and portable machine with handle.
- 4-step buttonhole function. Auto trip bobbin winder.
- Built in sewing light.
- Single touch reverse stitch lever.
- Free arm for circular stitching.
- Calibrated dial for thread tension control.



## Marvela

### 14 Stitch Function

- Compact and portable machine with handle.
- 4-step buttonhole function.
- Auto trip bobbin winder.
- Built in sewing light.
- Single touch reverse stitch lever.
- Free arm for circular stitching.
- Calibrated dial for thread tension control.



## Quilt Magic

### 300 Stitch Function

- Backlit LCD screen for enhanced informational display.
- Top loading full rotary hook and built-in one hand needle threader.
- 11 types of one-step buttonholes plus 1 font for monogramming.
- Start/stop button for ease of use.
- Stitch pattern memory capability. Maximum stitch width: 7 mm
- Extension table for extra wide projects. Quilting set included.



## Stitch Queen

### 9 Stitch Function

- Flatbed semi zig zag machine.
- Auto tripping bobbin winder.
- Snap on pressure foot and pressure adjuster.
- Length selector dial.
- Single touch reverse stitch lever.
- Can be operated through foot treadle.
- Motor can also be installed for operation through foot regulator.



## My Fab Barbie

### 21 Stitch Function

- Stitch length adjustment.
- Colour coded functional display.
- Built-in light.
- Triple strength stitch.
- Free arm for circular stitching.
- Complimentary Barbie "Book of sewing and dressmaking".
- Complimentary Barbie sewing box.
- Complimentary 2 special foot accessories.



## Allure Dlx

### 21 Stitch Function

- Automatic needle threader and thread cutter on face plate.
- 4-step buttonhole function.
- Colour coded functional display.
- Drop feed for embroidery.
- Triple strength stitch.
- Free arm for circular stitching.
- Metallic spool pins to ensure durability.



## Excella Dlx

### 21 Stitch Function

- Automatic needle threader and thread cutter on face plate.
- 4-step buttonhole function.
- Colour coded functional display.
- Drop feed for embroidery.
- Triple strength stitch.
- Free arm for circular stitching.
- Metallic spool pins to ensure durability.



## Wonder Stitch

### 21 Stitch Function

- Automatic needle threader and thread cutter on face plate.
- 4-step buttonhole function.
- Colour coded functional display.
- Drop feed for embroidery.
- Triple strength stitch.
- Free arm for circular stitching.
- Metallic spool pins to ensure durability.



## Style Stitch

### 35 Stitch Function

- Stitch length adjustment.
- Colour coded functional display.
- Built-in light.
- Triple strength stitch.
- Free arm for circular stitching.  
Complimentary Barbie "Book of sewing and dressmaking".
- Complimentary Barbie sewing box.
- Complimentary 2 special foot accessories.

## Wonder Stitch Plus

### 35 Stitch Function

- Automatic needle threader and thread cutter on face plate.
- 4-step buttonhole function.
- Colour coded functional display.
- Drop feed for embroidery.
- Triple strength stitch.
- Free arm for circular stitching.
- Metallic spool pins to ensure durability.

## Mystique

### 35 Stitch Function

- Automatic needle threader and thread cutter on face plate.
- 4-step buttonhole function.
- Colour coded functional display.
- Drop feed for embroidery.
- Triple strength stitch.
- Free arm for circular stitching.
- Metallic spool pins to ensure durability.

## Stitch Magic

### 57 Stitch Function

- Automatic needle threader and thread cutter on face plate.
- 4-step buttonhole function.
- Colour coded functional display.
- Drop feed for embroidery.
- Triple strength stitch.
- Free arm for circular stitching.
- Metallic spool pins to ensure durability.



## Sew Magic

### 30 Stitch Function

- Automatic needle threader and thread cutter on face plate.
- Three dials for stitch width, stitch length, and pattern selection.
- Colour coded stitch reference chart for pattern selection.
- Handle for easy portability.
- Feed drop mechanism, lever for reverse stitching.
- Aluminium die-cast full body.



## Design Craft

### 50 Stitch Function

- Backlit LCD screen for enhanced informational display.
- Top loading full rotary hook.
- Lock stitch button for locking the end of the seam.
- One touch reverse stitch button.
- Needle up down button for stitching perfect corners.
- 3 one-step buttonholes.
- Extension table for extra wide projects.
- Start/stop button for ease of use.



## Dream Maker 120

### 120 Stitch Function

- Backlit LCD screen for enhanced informational display.
- Variable speed controller with start/stop button for hands free operation.
- Mirror image option for stitch patterns.
- 7 mm stitch width.
- Extension table for extra wide projects.
- Automatic thread cutter.

# Embroidery Odyssey With Memory Craft:

The Memory Craft Sewing Machine range is celebrated as the paragon of computerized luxury in sewing. This elite series of specialized and professional machines seamlessly integrates cutting-edge technology with exquisite embroidery craftsmanship, designed for those who demand excellence in garments, quilting, and home decor. With its seamless Wi- Fi and iPad compatibility, the Memory Craft unlocks limitless creative possibilities.

Experience unparalleled speed and precision with sewing speeds of up to 1,000 stitches per minute. Enhanced with specialty stitches and an advanced feed mechanism, this machine offers an extraordinary edge for those who aspire to achieve perfection in every stitch.





## Memory Craft



### MB 7E

#### MB7E: Single-Head 7- Needle Embroidery Machine

- Artistic Digitizer provided free with the machine. Independent bobbin winding
- USB compatible. Direct PC Link
- Compatible with Tajima hoops
- 4 white LED lights over needle area for easy viewing
- 3 Hoops: M1 (240 x 200mm), M2 (126 x 110mm), M3 (50 x 50mm)
- RCS (Remote Computer Screen) control panel included. Total weight of the machine is 23 kg



## Skyline S9

### Embroidery Machine

- Wifi enabled machine
- Available iPad apps including AcuEdit, AcuMonitor, and AcuSetter
- Artistic Digitizer, a designing software, provided free with the machine
- LCD full colour touch screen
- Real time PC connection with Acutools 5 for combining and editing embroidery designs
- 2 & 3 letter monogramming functions with maximum stitch width of 9 mm
- Couching kit provided with the machine.



## 9850 E

### Embroidery Machine

- Sewing and embroidery machine with an embroidery area of 200 mm x 170 mm
- Artistic Digitizer, a designing software, provided free with the machine
- Touch screen for design selection
- USB Port (A&B) for more customised designs
- Embroidery speed: 800 SPM and Stitching speed: 1000 SPM
- Comes with detachable embroidery unit.





FREE

*Artistic*  
DIGITIZER

180  
BUILT IN  
EMBROIDERY  
DESIGNS

6  
BUILT IN  
MONOGRAMMING  
FONTS

## 550 E

### Embroidery Machine

- Embroidery machine with a large embroidery area – 200 mm x 360 mm
- Touch screen for design selection
- Artistic Digitizer Junior, an editing software, provided free with the machine
- Embroidery speed 860 SPM
- Fine position/angle adjustment key for perfectly aligning two designs
- USB Port (A&B) for customised designs/ direct connection with PC.



FREE

*Artistic*  
DIGITIZER

160  
BUILT IN  
EMBROIDERY  
DESIGNS

6  
BUILT IN  
MONOGRAMMING  
FONTS

## 450 E

### Embroidery Machine

- Can embroider designs of up to 200 mm x 280 mm & 200 mm x 200 mm
- It comes with two hoops – RE28b: 200 mm x 280 mm and SQ20b: 200 mm x 200 mm
- 13-cm full colour LCD touchscreen
- One-screen editing function includes enlarge/ reduce, rotate, flip, drag and drop, arc, combine, copy and paste, grouping, corner layout, single colour sewing, zoom
- Speed: 860 stitches per minute
- Comes with Artistic Digitizer Junior, a software which allows one to edit existing designs and customise designs too.



FREE  
*Artistic*  
DIGITIZER

180  
BUILT IN  
EMBROIDERY  
DESIGNS

6  
BUILT IN  
MONOGRAMMING  
FONTS

## 6700 P

### Quilting Machine

- Dials for stitch length and stitch width control
- 9 one-step button holes
- Accufeed Flex: layered fabric feeding system
- 91 needle positions
- Speed: 1200 stitches per minute
- Designed specifically for quilters with 28 cm space to the right of the needle for seamless stitching experience.



FREE  
*Artistic*  
DIGITIZER

160  
BUILT IN  
EMBROIDERY  
DESIGNS

6  
BUILT IN  
MONOGRAMMING  
FONTS

## 8200 QCP

### Quilting Machine

- 10 one-step button holes
- Detachable Accufeed Flex system
- Super fine needle position adjustment
- Start/stop button plus speed control slider for ease of use
- Speed: 1000 stitches per minute
- 28 cm space to the right of the needle for smoother stitching.

# Machine Accessories:

A foot is an elegantly designed component that gently holds the fabric in place, guiding it flawlessly through each precise stitch. Beyond the standard foot, we offer a curated collection of specialized feet, and other accessories, each crafted to enhance your sewing experience with extreme precision.





## Machine Accessories

Creativity Enhancing Attachments



0.65 cm Seam Foot



Beading Foot



Binder Foot



3-Way cording foot



Darning Foot



Gathering Foot



Pintucking Foot



Piping Foot



Ribbon / Sequin Foot



Ruffler



## Machine Accessories (Additional accessories based on compatibility)

### Allure Wonder Stitch Wonder Stitch Plus Stitch Magic

- SM darning foot unit
- SM 0.65 inch seam foot
- SM gathering foot
- SM binder Foot
- SM pintucking foot
- SM piping foot
- SM ruffler (Snap-On Type)
- SM beading foot
- SM 3-way cording foot
- SM ribbon/sequin foot
- SM ultraglide foot 5 mm
- Roller foot (Oscillating)
- Rotary even foot
- Walking (foot open toe with quilting guide)
- Flower stitching attachment
- SM fringing foot N - 5 mm
- SM concealed zipper foot (Unit) -5 mm

### Dream Magic 120 & Quilt Magic

- Circular attachment - 7 mm
- Ultraglide foot (horizontal) - 7mm
- Roller feet (horizontal) - 7 mm
- SM concealed foot - 7 Mm
- SM ruler worker foot N - 7 mm

### Memory Craft Machines

- SM ribbon/sequin foot - 9 mm
- Ruffler foot - 9 mm
- Cording foot - 9 mm
- Pintucking foot (wide N1) - 9 mm
- Pintucking foot (narrow N2) - 9 mm
- Beading foot unit (narrow L1) - 9 mm
- Beading foot unit (wide L2 ) - 9 mm
- Circular attachment - 9 mm
- Convertible even feed foot - 9 mm
- Free-motion couching - 9 mm
- SM quilt hemming foot
- SM quilt free motion couching foot - 9 mm
- SM fringing foot - 9 mm
- SM hemming foot - 9 mm
- SM quilt applique foot - 9 mm
- SM ditch quilting foot - 9 mm
- SM concealed zipper foot - 9 mm
- SM binder set - 9 mm
- SM quilt Accufeed Flex Profess grade foot - 9 mm
- SM ruler worker footer - 9 mm

### Memory Craft 550 E & Memory Craft 450E

- SM embroidery foot unit - MC 550 E / 450 E

### Memory Craft 550 E

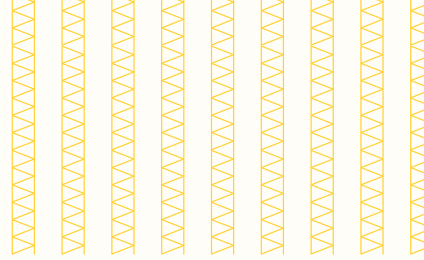
- SM hat hoop insert

### Memory Craft 6700 P

- SM quilt prof grade needle plate
- SM quilt bobbin holder unit
- SM bobbin holder unit
- SM bobbin holder unit N

### All Machines

- SM HA 15 x1 SP ball point needle (Assorted)
- SM HA 15 x1 SP ball point needle - Size 14
- SM HA 15 x1 SP ball point Needle Size 12
- SM HA 3 red tip
- SM HA 11 SP blue tip
- SM needle imp
- SM bobbin set



**For more information, reach us at:**

The hab by USHA, G-1, 444 Corporate Lounge, Opp. Sahib Khatwara Darbar, Road No. 7,  
Khar - Bandra Linking Road (Near Citibank), Khar (W), Mumbai - 400 052.

 [www.thehab-usha.com](http://www.thehab-usha.com) |  [thehab@usha.com](mailto:thehab@usha.com) |  +91 - 77770 26367